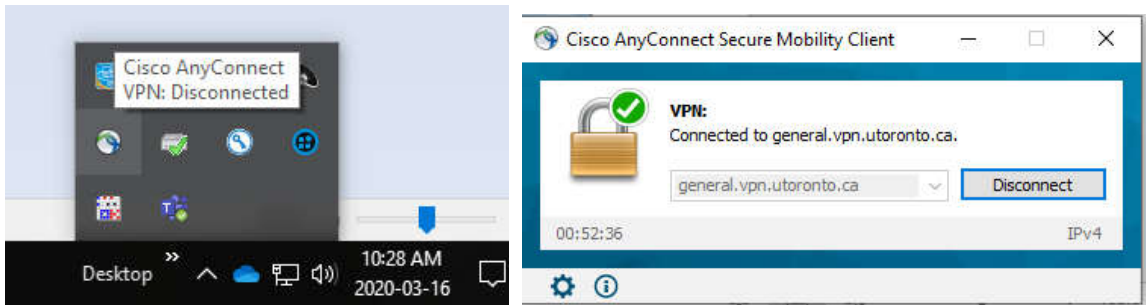


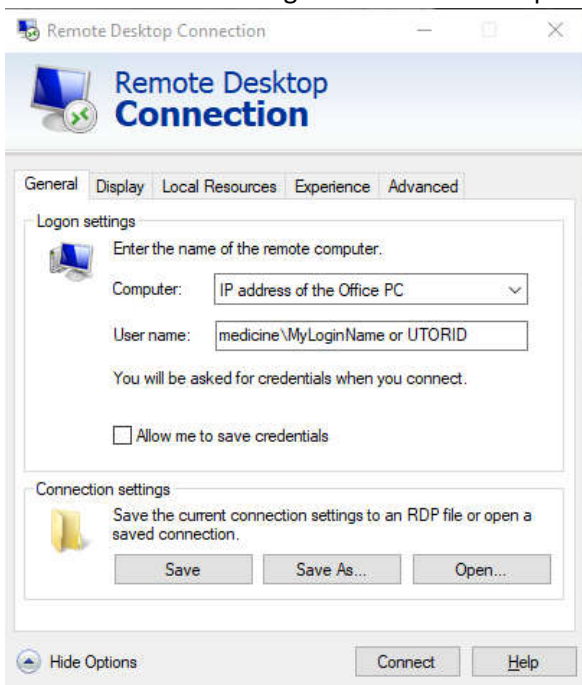
## Using your E-Token from home to access AMS, HRIS, FIS

To access your AMS, HRIS or FIS from home please follow these steps.

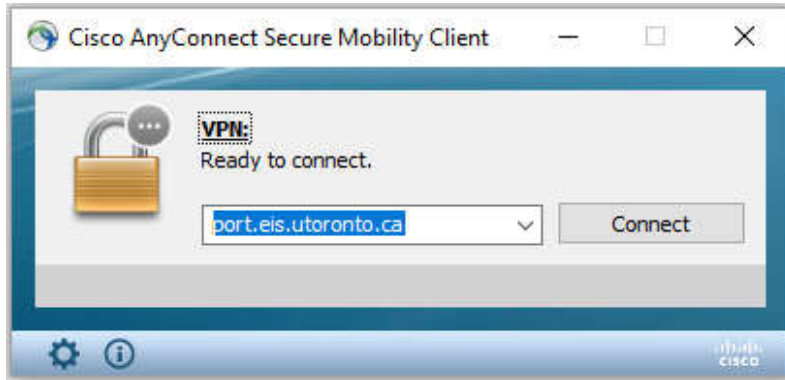
1. Please make sure to take your E-Token home with you. You will need it to successfully connect from home.
2. Please make sure that you do have Safenet installed on the home PC as well.  
Safenet can be downloaded at: <https://secure.sis.utoronto.ca/>
3. On your home computer, once you have logged in. Ensure that you are connected to the internet.
4. Insert your E-Token into your home computer.
5. Launch your Cisco VPN and make sure that you are connecting to “general.vpn.utoronto.ca”



6. Click connect and wait for the successfully connected notice.
7. Connect as normal using the Remote Desktop Connection.



- When connected to the office PC, click on the Cisco connection on the office PC. This time, you are connecting to “port.eis.utoronto.ca”. After the connection was established with port.eis.utoronto.ca, your EToken certificate will pop-up and available for selection.



- You can now use AMS, HRIS or FIS as usual from the home PC using the Office desktop to launch the AMS software by clicking on the appropriate AMS icon on the office PC.