

Microsoft Remote Desktop Client for Mac OS Version 8.0.3

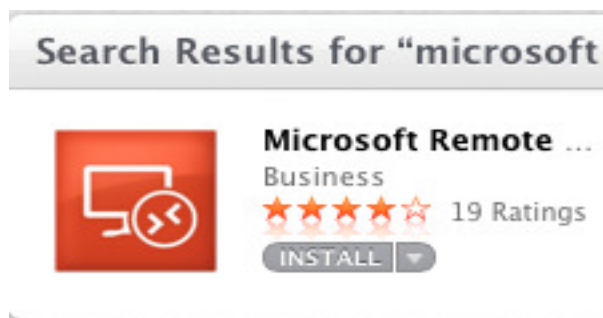
Microsoft Remote Desktop Client for Mac OS (“the client”) requires Mac OS version 10.6.0 or higher. Typically Mac OS 10.6.0 is found on the Mac desktops/laptops purchased after August 2009.

To verify the version of your Mac, you click on the Apple logo (upper left corner of your screen) and then choose **About This Mac**. The version number is listed under OS X. See the picture below showing Version 10.9.1



Once you have the confirmation that the version is supported, you can proceed with the download of Microsoft Remote Desktop Client

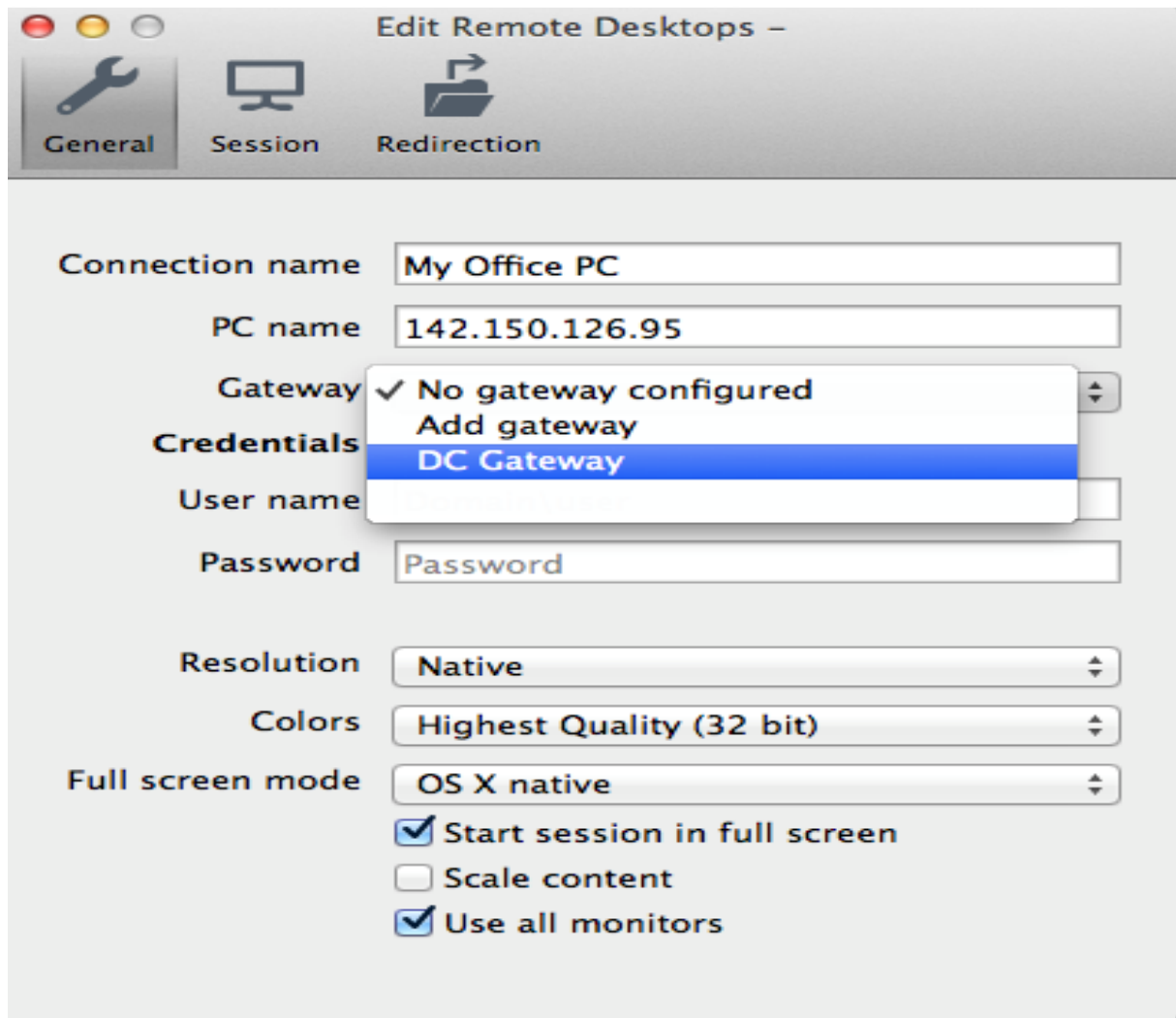
1. Open the App Store on your Mac
2. Search for “Microsoft Remote”, you will get two results. Choose the **red icon Microsoft Remote Desktop** and click on **Install** (see below)



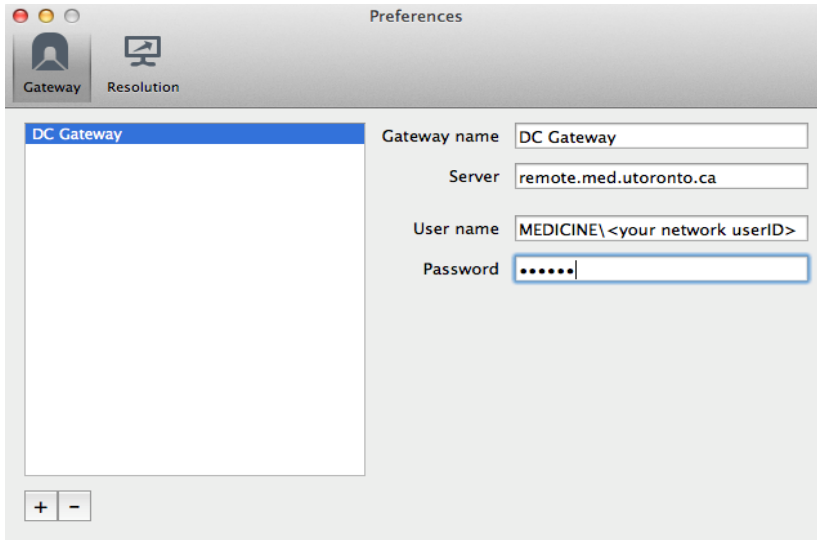
3. Wait for the installation process to download and install the client. After few minutes (depending on your internet connection speed) the **Install** text will change to **Installed**. It means that the client was installed on your Mac desktop/laptop
4. (Optional) Open the Application folder and create a shortcut by dragging Microsoft Remote Desktop icon on your desktop.

5. Open the client (double-click the shortcut) and then click on **New**
6. Fill out the blanks with the following info
 - **Connection Name:** Give this connection a name, such as My Office PC
 - **PC Name:** This is where you put the IP address of your office PC
 - **Gateway:** Click on **No Gateway configured** and a new window will pop-up (see **Picture 2 – Gateway settings** on page 3)
 - Configure the gateway (see page 3)

Picture 1 – General Settings



Picture 2 – Gateway setting

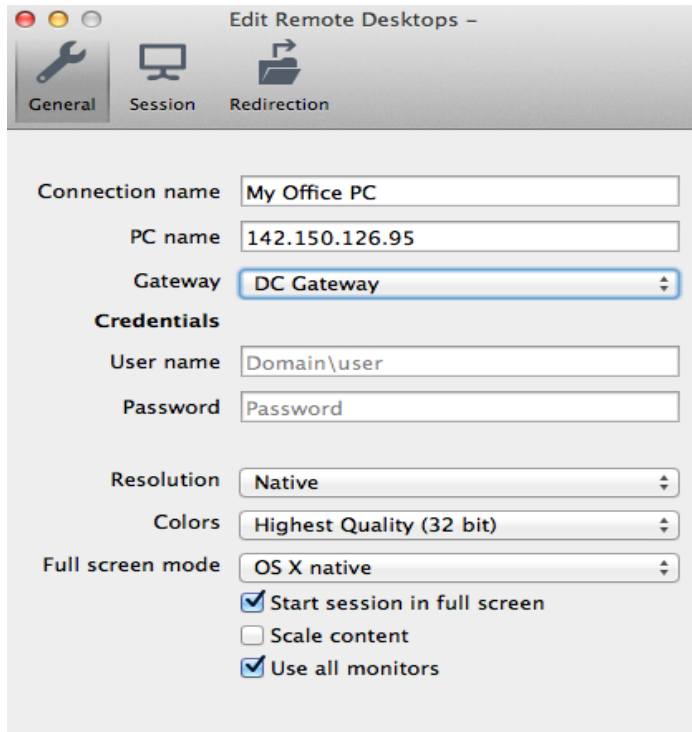


- Click on + sign (lower left corner) and fill out the blanks as follow
Gateway Name: DC Gateway
Server remote.med.utoronto.ca
Username MEDICINE\<your network user ID>
Password: your password
 - Click again on + sign and a new entry called DC Gateway will appear on the left pane (see picture above)
 - You can close this window
7. Go back to the **Edit Remote Desktops** windows above (Picture1 – General Settings)
8. Click on Gateway and, from the drop-down list, pick **DC Gateway** entry you just created.
9. Fill out the **Credentials** section as follows

Username: MEDICINE\<your network userid>
Password: <your windows password>

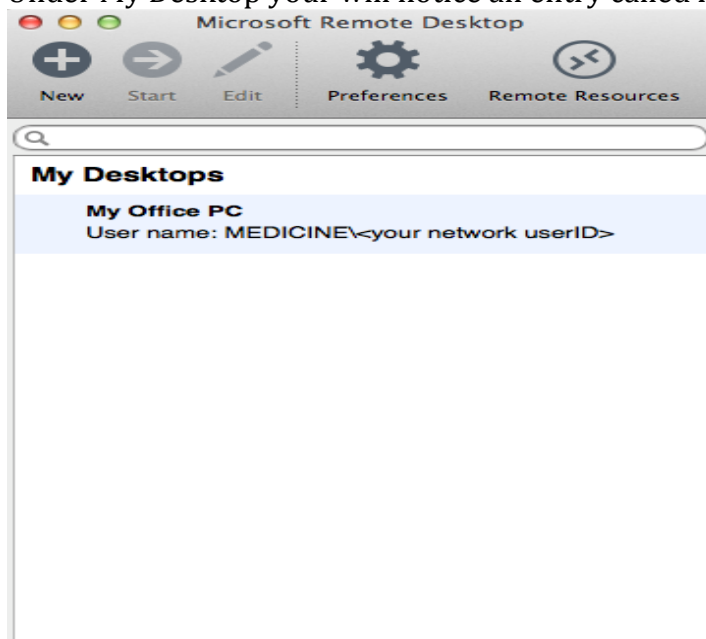
Note: the username and password you use here are the same you used to create **DC Gateway** entry

Your **Edit Remote Desktops** windows should look like in the picture below



10. Close this window and go back to **Microsoft Remote Desktop** window

11. Under My Desktops you will notice an entry called **My Office PC**



12. Highlight the entry and then click on **Start**

13. If asked, accept your office computer certificate and then click **Continue**

14. Your office PC desktop will open on your Mac

15. To close the session simply log off your office PC